

Application Area:	Industry, Chemical Industry
Resolution:	5 +/- 2 mm
Min. Mounting Length:	400 mm
Max. Mounting Length:	3000 mm

Transmitters of the series XM-800E (XT-800E) provide reliable measurement and control for liquid levels. Additionally they can be used as position sensors for vertical displacements. The transmitters are built according to user-specific requirements. They have proved successful in a wide range of different industrial applications as well as in many special applications.

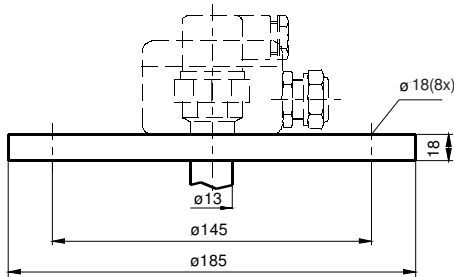
Depending on liquid level or displacement a magnet equipped float actuates some reed switches located in the stem. The transmitter works according to the principle of a voltage divider. Output signals can be a voltage (XM-800E) or a current (XT-800E) proportional to the float displacement. Such signals can be processed to drive analog or digital displays, give optical or acoustical alarms, or be fed into computers.

No 3.1 certificate available

XM-800E (XT-800E)

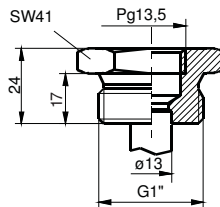


Mounting



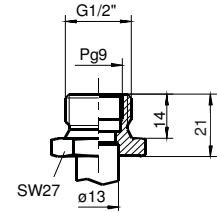
Flange DN65/PN16 EN1092-1 *

- BCCC 316/316L/316Ti
- Other flanges on request.
- Min. DN65 od. 2 1/2" ANSI



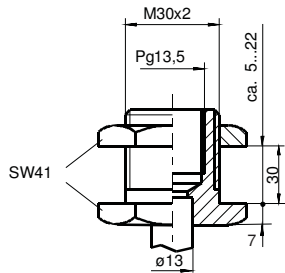
Tank screw fixing 1"

- TC 1 316/316L/316Ti



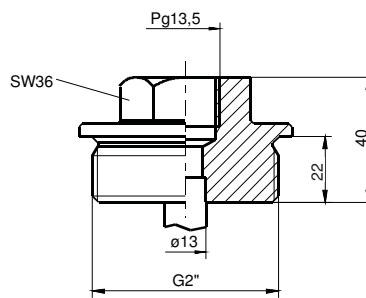
Inside screw fixing 1/2"

- EC 1/2 316/316L/316Ti



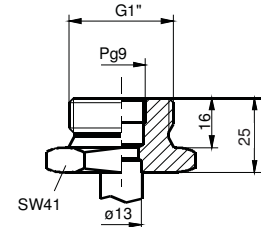
Bulkhead fitting

- AC 316/316L/316Ti



Tank screw fixing 2"*

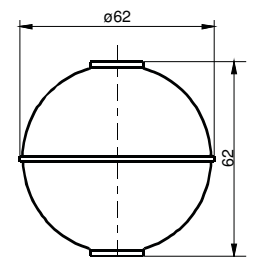
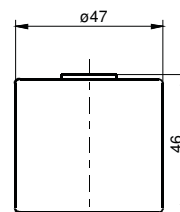
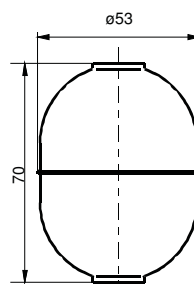
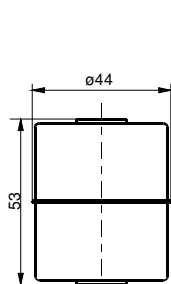
- TC 2 316/316L/316Ti



Inside screw fixing 1"

- EC 1 316/316L/316Ti

Floats



Type • C44 *
 Material 316/316L/316Ti
 Max. pressure 12 bar
 Media temperature -20 °C...150 °C
 Minimum density of the liquid 0.85 g/cm³
 Immersion depth at density = 1 g/cm³ 40 +/- 2mm

• C53 *
 316/316L/316Ti
 20bar
 -20 °C...150 °C
 0.75 g/cm³
 42 +/- 2mm

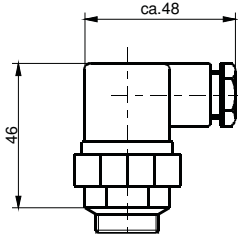
• N47 *
 Buna N
 10bar
 -20 °C...80 °C H₂O
 -20 °C...100 °C Öl
 0.65 g/cm³
 19 +/- 2mm

• Ti62
 Titanium
 15 bar
 -20 °C...150 °C
 0.60 g/cm³
 32 +/- 2 mm

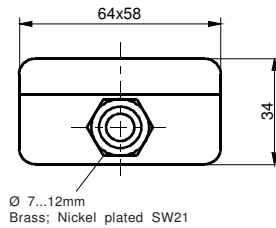
* Versions with protection tube (damping tube) on request

Electrical connection XM-800E (3-wire)

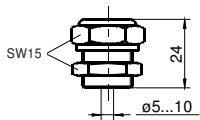
- S Plug connector



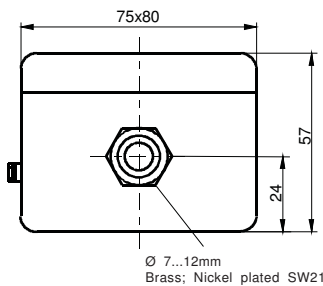
- K6 Junction box



- P Cable gland

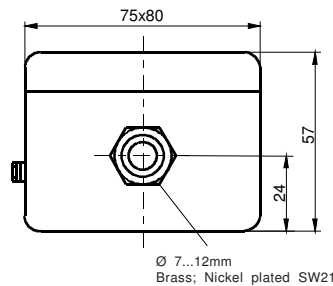


- K11 Junction box

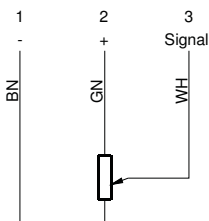


Electrical connection XT-800E (2-wire)

- K11 Junction box



Wiring diagram XM-800E with voltage signal



Note

Because of the internal wiring of the transmitter, the output voltage and not the transmitter resistance has to be measured when a test is taken.

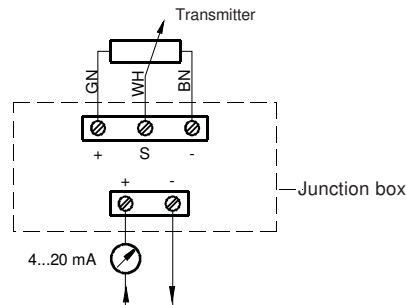
Function

Operation of the transmitter in connection with signal processing units; In this mode of operation voltage supply is provided by the processing units. Operation of the transmitter in connection with other signal processing units: 10...24 V DC, stabilized.

Technical data

Media temperature	depending on float
Supply voltage	10...24 V DC
Internal resistance	700 Ω ...2800 Ω
Enclosure	IP 65

Wiring diagram XT-800E with current signal

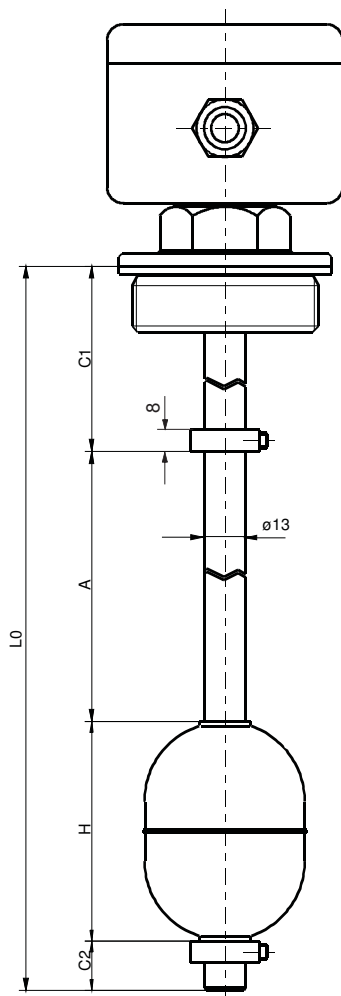


Function

The mode of operation of the transmitter XT-800E is basically the same as the mode of operation of the XM-800E. The XT-800E provides an output signal of 4...20 mA (2-wire technique; current sink) not a voltage. The same technical data is valid for mounting elements, floats and dimensions as for the transmitter XM-800E. The electrical wiring is made via the junction box which houses the signal converter.

Technical data

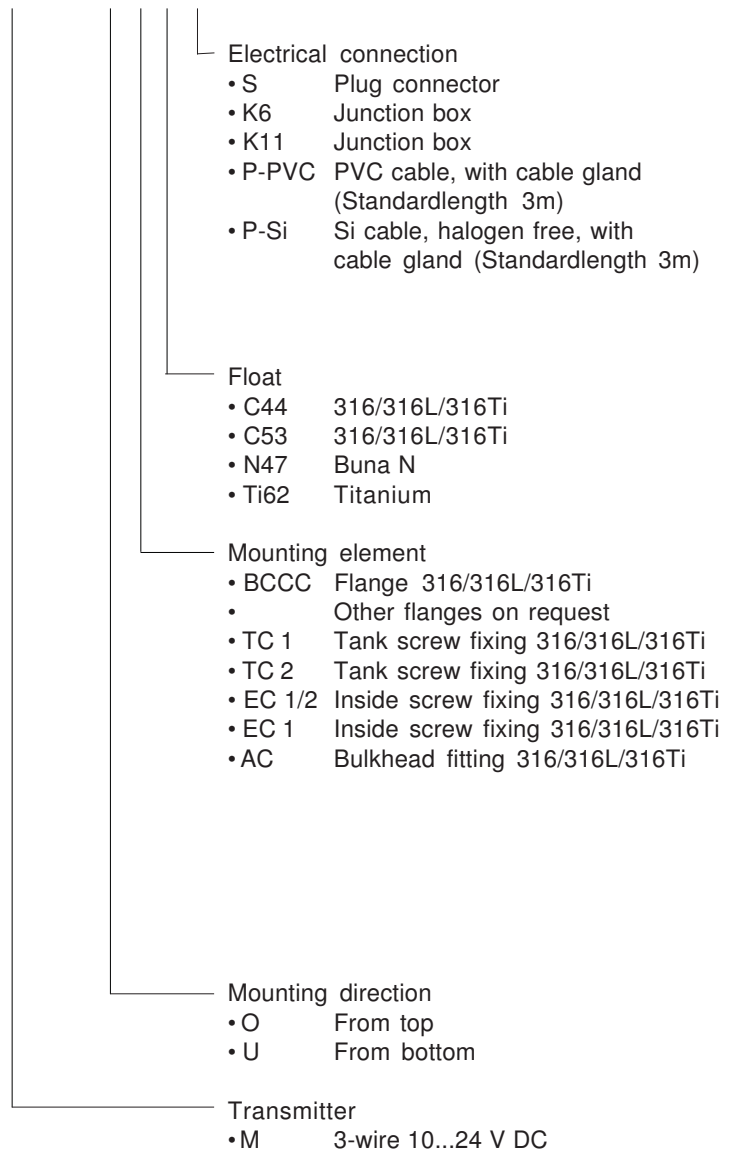
Ambient temperature	0 °C...60 °C
Supply voltage	10...40 V DC
Output signal	4...20 mA; current sink
Max. load	100 Ω (10 V) 1.2 kΩ (40 V)
Max. current	20 mA
Enclosure	IP 65



Order data

Type code:

X...-800E-...-...-...-...



Dimensions

- LO Mounting length (LO max. = 3000 mm)
- A Indication length (float displacement)
- C1 Upper deadline
- C2 Lower deadline min. 10 mm
- H Float height

$LO = A + C1 + C2 + H$

For versions with an upper set collar:
 C1 = minimum measure* + set collar thickness (8mm)
 * minimum measure see below mounting elements

Typical order data XM-800E-O-TC2-C53-K11 (example)

- LO Mounting length 740 mm
- A Indication length 600 mm
- C1 Upper deadline 60 mm
- C2 Lower deadline 10 mm
- O Top mounting
- TC 2 Tank screw 2" 316/316L/316Ti
- C53 Float H=70 mm