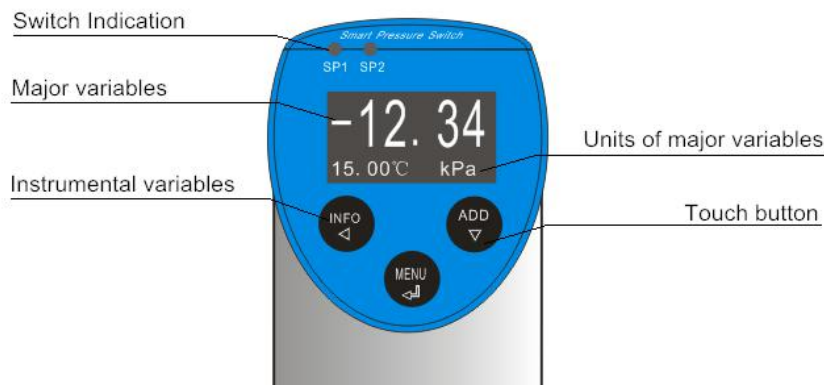

Smart Electronic Switch

Operation Instruction

Smart Pressure and Level Switch

Operation Instruction

1. Operation Panel



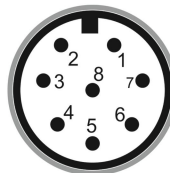
2. Wiring Diagram

M12X1 5-Pin



- 1: VCC (Power+)
- 2: K1 (Switch 1)
- 3: GND (Power-)
- 4: K2 (Switch 2)
- 5: AO (Analog output)

M12X1 8-Pin



- 1: VCC (Power+)
- 2: K1 (Switch 1)
- 3: GND (Power-)
- 4: K2 (Switch 2)
- 5: AO (Analog output)
- 6: A (RS485-A)
- 7: B (RS485-B)
- 8: NC

3. Switch Indication

- a. Indication light SP1 or SP2 is on to indicate that the switch is on, light off to indicate the switch is off;
- b. Switching movement has windows type and delay type. If you need to set windows type, simply set the corresponding switch delay to 0 second;
- c. Lower limit of switch must be set smaller than upper limit.

4. Instrumental variables symbols instruction

Instrumental variables can display:

- 1、 High peak value $\bar{\uparrow}$, units same as major variables;
- 2、 Low peak value \downarrow , units same as major variables;
- 3、 Analog output value, unit: mA, V;
- 4、 Smart switch inner temperature, unit: °C。

5. Buttons instruction



Menu/confirm button. In the main interface mode, press the button to enter the menu; in menu interface mode, it is confirm button; in parameters modification mode, it is save and confirmation button.



Information/back button. In the main interface mode, long press the button to switch instrumental variables display; in menu mode, press the button to backward; in parameters modification mode, it is to modify and select data bits;



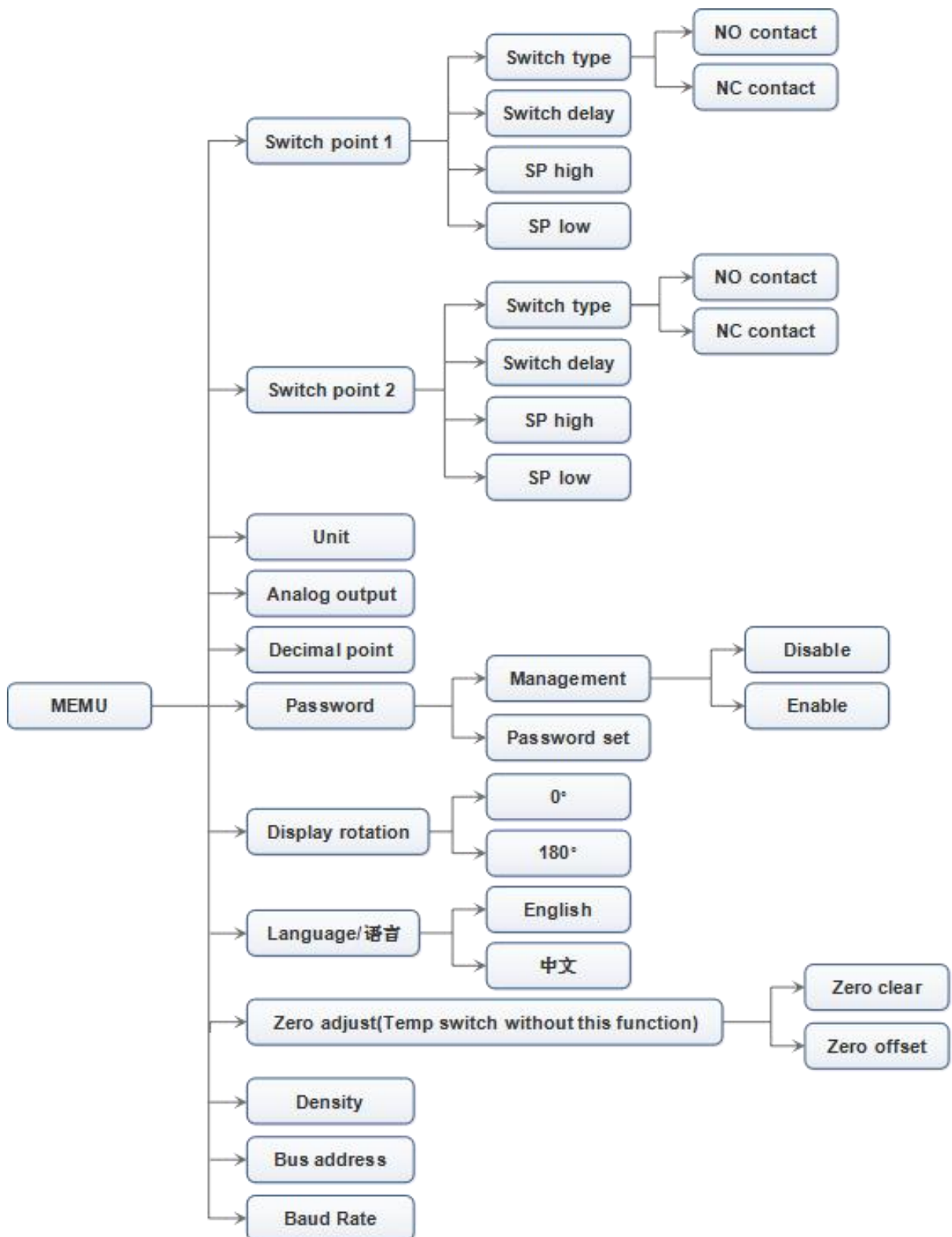
+1/down button. In the main interface mode, the button is invalid; in menu interface mode, press the button to move down; in parameter modification mode, press the button to +1 for selected data bits or move selected decimal point circularly.

When the smart switch is not at main interface and no button is pressed over 30 seconds, the system will back to main interface, modified parameters will not be saved.

6. Password protection

If the system sets password protection function, you need to input correct password to enter menu and set parameters. Password can be managed and set in the menu.

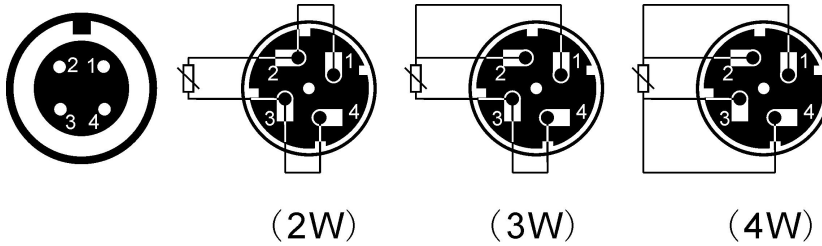
7. Tree menu



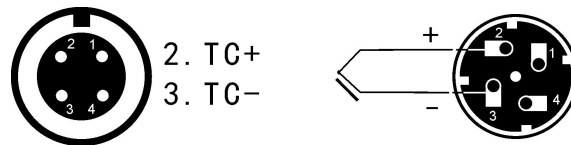
8. Split type transmitter wiring

Split temperature transmitter's sensor with M12 plug connection, for sensor and plug wiring please refer to the following figure.

8.1 Thermal resistance sensor wiring:



8.2 Thermocouple sensor wiring:



9. Color Diagram of Butt Socket

